

Mid Wales Joint Committee (MWJC)

Bi-Annual Meetings

- Held in public
- Annual Conference

Members

- MWJC Leadership Team
- Health Board Chief Executives
- Local Authority Senior Leaders (one elected and one officer representative)

Associate Members

- Subgroup Chairs

Co-opted Members

- Llais

MWJC Programme Team
 Programme Director 0.2 WTE
 Programme Manager 0.8 WTE
 Project Support Officer 1 WTE

MWJC Leadership Team
 Lead Chair – HDdUHB Chair
 Lead CEO – PTHB CEO
 Lead Director of Planning – PTHB Director of Planning
 Lead Clinical Director – PTHB Medical Director
 Programme Director – HDdUHB County Director Ceredigion

Mid Wales Planning and Delivery Executive Group

- Bi-Monthly meetings
- Members:
 Lead CEO
 HB Directors of Planning or nominated deputy
 HB Directors of Workforce or nominated deputy
 Subgroup Chairs
 MWJC Programme Director

Health Boards

Mid Wales Commissioning Group

- Bi-Monthly meetings
- Members:
 HB Directors of Planning or nominated deputy
 HB Senior Manager leads for Commissioning, Contracting and Finance
 MWJC Programme Director

Mid Wales Clinical Advisory Group

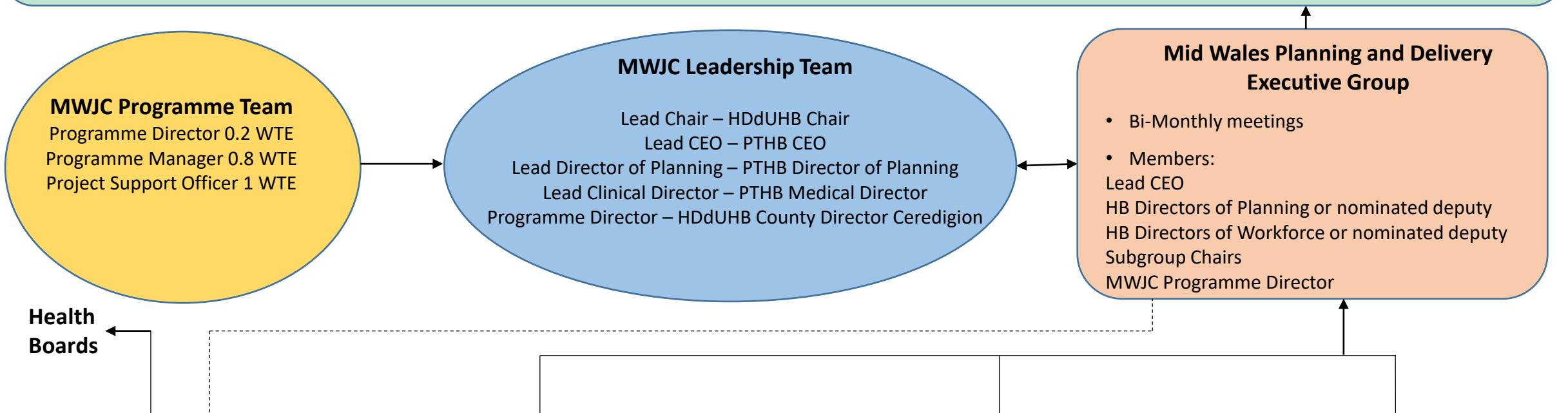
- Bi-Monthly meetings
- Members:
 Lead Clinical Director (Chair)
 HB/WAST Clinical Leadership Teams
 GP Cluster Leads
 HB Directors of Public Health
 SaTh and WVT clinical representatives
 AU School of Nursing representative
 MWJC Programme Director

Mid Wales Social Care Group

- No formal meetings, monthly emails and workshops for priorities
- Members:
 LA Directors of Social Care or nominated deputy
 Senior Manager leads for Social Care and Commissioning (Adults and Childrens)

Rural Health and Care Wales Stakeholder Group

- Quarterly meetings
- Members:
 MWJC Programme Director
 HB and LA Chief Executives or nominated deputy
 Higher Education Vice-Chancellor or nominated deputy
 Welsh Government representative
 HEIW representative



Mid Wales Planning and Delivery Executive Group – Working Groups

